

AGENDA SUPPLEMENT (1)

Meeting: Health Select Committee
Place: Kennet Room - County Hall, Bythesea Road, Trowbridge,
BA14 8JN
Date: Tuesday 18 December 2018
Time: 10.30 am

The Agenda for the above meeting was published on 10 December 2018. Additional documents are now available and are attached to this Agenda Supplement.

Please direct any enquiries on this Agenda to Roger Bishton, of Democratic Services, County Hall, Bythesea Road, Trowbridge, direct line (01225) 713035 or email roger.bishton@wiltshire.gov.uk

Press enquiries to Communications on direct lines (01225)713114/713115.

This Agenda and all the documents referred to within it are available on the Council's website at www.wiltshire.gov.uk

8 **CQC - action plan update (Pages 3 - 8)**

DATE OF PUBLICATION: 13 December 2018

This page is intentionally left blank

Wiltshire Council

Health Select Committee

18 December 2018

Subject: CQC Action plan update

Executive Summary

- I. The CQC Local Action plan was submitted to CQC in July 2018. The local action plan at that time was a direct response to the sixteen areas of concern raised in relation to the interface between health and social care services.
- II. The CQC local action plan has now been subsumed into the wider Wiltshire Integration Programme. The September Health Select committee requested a brief update report focussed on actions that have been completed since the last update or to advise of any actions that are behind schedule. This report provides the requested updates. Going forward reporting on the Wiltshire Integration Programme will take place through the wider system wide integration governance structures which have now been implemented.

Proposal(s)

It is recommended that the Board:

- i) Note the progress on the new Wiltshire Health and Social Care model, along with the now fully delivered changes to whole system governance, and other developments and plans now in place across the programme
- ii) To note and comment on the decisions taken by Wiltshire Integration Board in respect of the implementation of a Wiltshire focussed Workforce sub group, and the decision taken to align digital approaches with the larger STP footprint

Reason for Proposal

Update on the Wiltshire Integration Programme following the CQC review process.

Presenter name: Carlton Brand

Title: Corporate Director

Organisation: Wiltshire Council

Subject: CQC Action plan update

Purpose of Report

1. Health Select Committee members are asked to note the progress on the delivery of a new Wiltshire Health and Social Care model, the fully delivered changes to whole system governance, and other developments now in place across the programme.

Background

2. At the September meeting of the Health Select Committee, committee members were briefed on the programme delivery plan following the CQC local review process. The delivery plan remains a collective response by commissioners and providers to improve integration and the experiences of Wiltshire residents who use health and social care services.

Overall responsibility for delivery of the Wiltshire Integration Programme remains with the Health and Wellbeing Board whilst the Wiltshire Integration Board will be accountable for successful delivery.

Main Considerations

3. Since the September update to Health Select Committee further progress has been made in the delivery of the Programme. This section provides a summary of work ongoing, and completed across the workstreams. In summary:

3.1 New Wiltshire Health and Social Care framework- to help people in Wiltshire to live as well as possible –

The Wiltshire Delivery Group (WDG) is now in place and brings together experts across the health and social care providers including voluntary sector within Wiltshire to focus on design and delivery of the Wiltshire new model of integrated health and social care based on the outcome and specifications set jointly by health and social care commissioners.

The Delivery Group has strong representation from stakeholders and partners (RUH, SFT, GWH, Age UK, Wiltshire CIL, Wiltshire GP Alliance, Public Health and Medvivo, and Adult Social Care operations). The group has agreed to use the principles of the King's Fund model for care for all adults and not just older people to develop the Wiltshire model of care. The focus is to shift from reactive care to preventative and pro-active care.



The group has begun to identify the potential geographic locations of new Integrated Neighbourhood Areas in line with the following national and STP definitions;

	Level	Pop. Size	Purpose
	Neighbourhood	~50k	<ul style="list-style-type: none"> Strengthen primary care Network practices Proactive & integrated models
	Place	~250-500k	<ul style="list-style-type: none"> Borough/council level Integrate hospital, council & primary care services
	System	1+m	<ul style="list-style-type: none"> System strategy & planning Implement strategic plan
	Region	5-10m	<ul style="list-style-type: none"> Hold systems to account System development Intervention and improvement

In principle eleven GP Localities will be used as Integrated Neighbourhood areas, we anticipate that integrated teams will including primary care, community, social care and the voluntary sector will operate within the boundaries of each Integrated Neighbourhood. Work is ongoing to look at how these new Integrated Neighbourhood areas could operate across the eighteen existing Local Area Boards, and alongside with the three existing Adult Social Care hubs.

3.2 Single overarching strategy to provide more effective prevention, health and social care outcomes for the population- We will create and implement one approach to provide people with better health and social care.

This work is underway, with a series of engagement workshops in place, the work is linked to the refresh of the Health and Wellbeing strategy which expires in 2019.

3.3 Strengthening Strategic Commissioning across the whole system - we will ensure that we buy the best systems and services to give our residents the best possible support when they need it.

The new Wiltshire Commissioning Group (WCG) accountable to Wiltshire Integration Board and Joint Commissioning Board (JCB) is now in place and brings the commissioners and experts across Wiltshire CCG (WCCG) and Wiltshire Council (WC) together to focus on all commissioning related matters and decisions across integrated commissioning areas between the WCCG and WC.

Terms of Reference have been accepted and signed off, and a series of priority areas have been agreed:

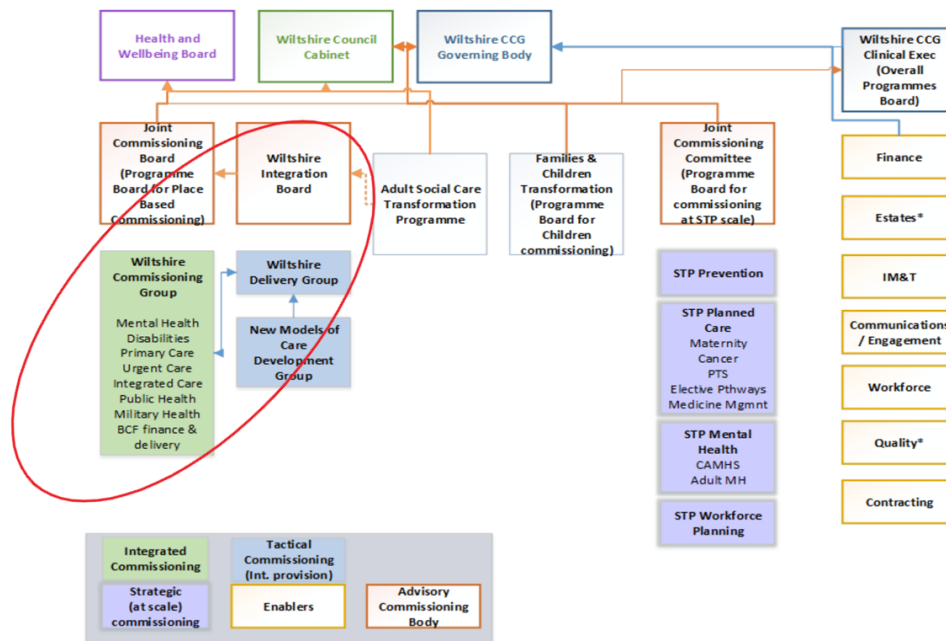
- Joint decision-making process for Urgent Children Placements
- Intermediate Care Bed Review
- Joint Commissioning Strategy for Accommodation
- Prevention/Demand Management/Reduction for both Health and Social Care

3.4 Improve Wiltshire's Health and Wellbeing Board effectiveness
- we will make and take decisions together at the top table

Changes to Health and well-being board report formats have been implemented to include a greater emphasis on timescale(s) and deliverable(s). This workstream's actions are almost complete

3.5 Unifying and developing whole system governance arrangements - we will work together to ensure our organisations work in safe and effective ways.

The overall governance structure between the WCCG and Wiltshire Council has been reviewed and a new governance structure has now been implemented. Subject to final approval by the January Wiltshire Integration Board the workstream will be closed-down and move to business as usual. The diagram below shows the updated governance structure:



We will keep this under review to ensure that efficient and effective governance structures are in place.

3.6 Developing a sustainable integrated workforce strategy- we will create and develop inspiring teams of people to meet the health and social care needs of the population

The Wiltshire Integration Board has now agreed to implement a new workforce sub-group reporting to the WIB and working closely with the WDG. The new workforce group will be set up and terms of reference are being produced, to include how the important work on Workforce aligns with existing initiatives such as the “proud to care” campaign.

It has been decided to recruit a new workforce lead to take this work forward with an emphasis on Wiltshire’s workforce challenges whilst at the same time maintaining alignment with the STP and wider regional workforce initiatives.

3.7 Implementing digital opportunities and information sharing across the system - we will use the right technology to share information safely and help to create the best experience for people when they interact with us

The programme of work for this area is being developed, and is complex given the nature of system interoperability and information governance challenges. The Wiltshire Integration Board have agreed that the approach to information sharing and the ICT solution should be delivered across a wider footprint than Wiltshire to achieve the “at scale” economies from a wider implementation at the STP footprint.

Meetings are now scheduled with the STP Chief Digital Officer to take this forward.

3.8 Single integrated engagement and communications strategy- we will listen and talk to people in a unified voice

Work has now commenced on the communications strategy and plan.

Next Steps

5. We would like to ask the Health Select Committee to note the development of the Wiltshire Integration programme, and to note the decisions taken by the Wiltshire Integration Board in respect of the delivery approach to Workforce and Digital.

6. Timescales

In the next period, we will be continuing with programme delivery focussed on the completion of the new health and Social Care model, the detailed definition of the work surrounding workforce and digital, and the completion of work surrounding the revised Health and Well-being strategy

Presenter name: Carlton Brand

Title: Corporate Director

Organisation: Wiltshire Council

Report Author: Tony Marvell, Wiltshire Council / Wiltshire Clinical Commissioning Group